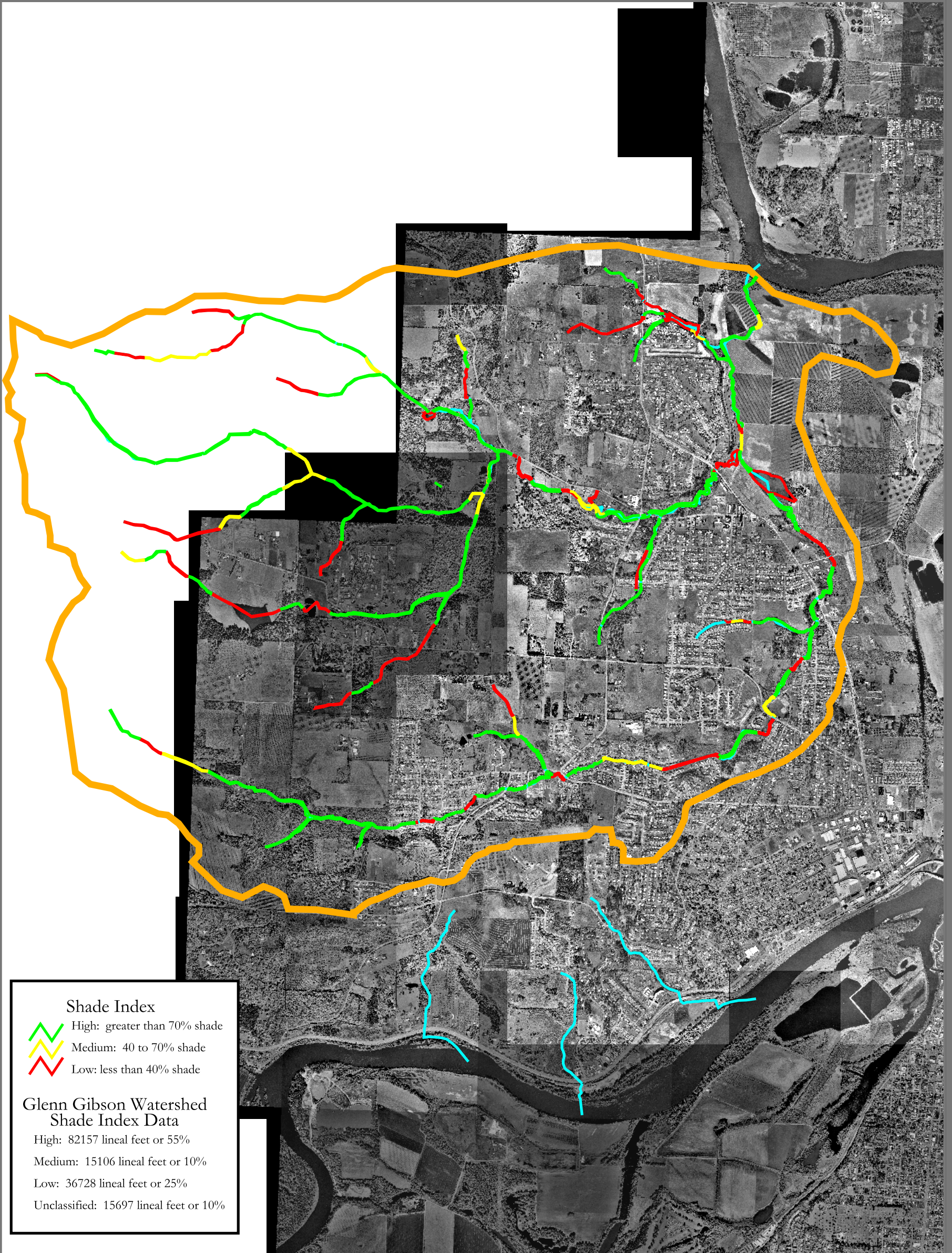





Glenn Gibson Watershed



Shade Index

-  High: greater than 70% shade
-  Medium: 40 to 70% shade
-  Low: less than 40% shade

**Glenn Gibson Watershed
Shade Index Data**

- High: 82157 lineal feet or 55%
- Medium: 15106 lineal feet or 10%
- Low: 36728 lineal feet or 25%
- Unclassified: 15697 lineal feet or 10%

Stream Shading

This map is for illustrative purposes only and is to be used for planning purposes.

Title: **Glenn Gibson Watershed
Stream Shading**

Prepared by:
Mid-Willamette Valley Council of Governments

Created by:
RSM/LEH

Date:
August 13, 2001

Revision:
2 (6/03)

Filename:
r:/common/naturalres/watersheds/streamcoverworking.apr

11x17 layout

The Mid-Willamette Valley
Council of Governments

105 High Street S.E.
Salem, OR 97301-3367
Phone: (503) 588-6177
Fax: (503) 588-6094
e-mail: mwvcog@open.org

 Glenn Gibson Watershed
 Water Features (Not Surveyed)

