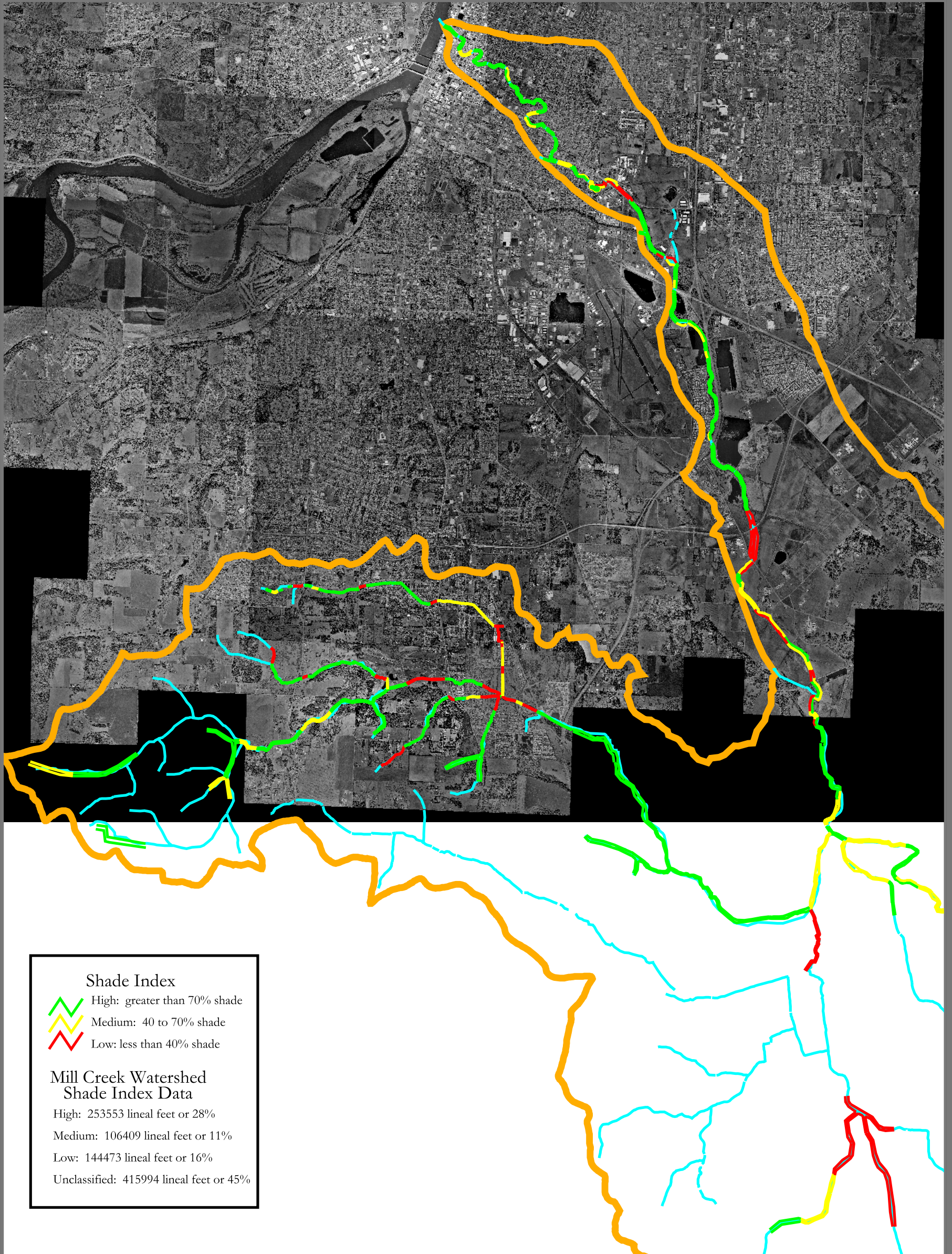





# Mill Creek Watershed



**Shade Index**

-  High: greater than 70% shade
-  Medium: 40 to 70% shade
-  Low: less than 40% shade

**Mill Creek Watershed  
Shade Index Data**

High: 253553 lineal feet or 28%  
 Medium: 106409 lineal feet or 11%  
 Low: 144473 lineal feet or 16%  
 Unclassified: 415994 lineal feet or 45%

## Stream Shading

This map is for illustrative purposes only and is to be used for planning purposes.

Title: **Mill Creek Watershed  
Stream Shading**



Prepared by:  
Mid-Willamette Valley Council of Governments

Created by: <b>RSM/LEH</b>	Date: <b>August 13, 2001</b>	Revision: <b>1</b>
-------------------------------	---------------------------------	-----------------------

Filename:  
r:/common/naturalres/watersheds/streamcoverworking.apr  
11x17 layout

The Mid-Willamette Valley  
Council of Governments

105 High Street S.E.  
Salem, OR 97301-3367  
Phone: (503) 588-6177  
Fax: (503) 588-6094  
e-mail: mwwcog@open.org

 Mill Creek Watershed  
 Water Features (Not Surveyed)

