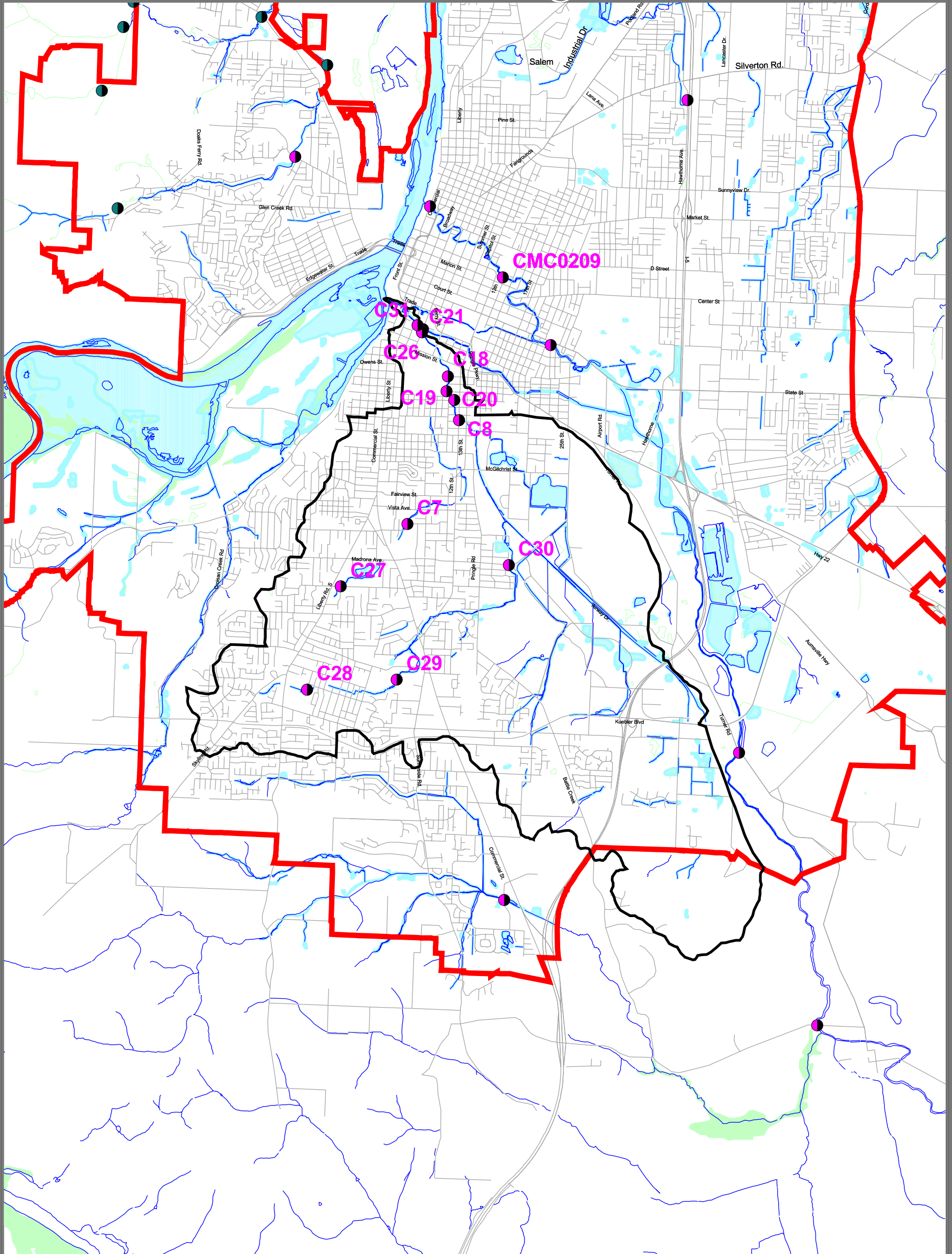


Pringle Creek Watershed



Water Quality Monitoring Stations

This map is for illustrative purposes only and is to be used for planning purposes.

Title: **Pringle Creek Watershed**
Water Quality Monitoring Stations

Prepared by:
 Mid-Willamette Valley Council of Governments

Created by: RSM	Date: February 20th, 2001	Revision: 1
--------------------	------------------------------	----------------

Filename:
 r:/common/naturalres/watersheds/watersheds.apr
 11x17 layout

The Mid-Willamette Valley
 Council of Governments

105 High Street S.E.
 Salem, OR 97301-3367
 Phone: (503) 588-6177
 Fax: (503) 588-6094
 e-mail:mwvcog@open.org

- | | |
|----------------------------|----------------------------------|
| Pringle Creek Watershed | City Monitored Site |
| Streets and Highways | Watershed Council Monitored Site |
| Water Features | School Monitored Site |
| Urban Growth Boundary | |
| National Wetland Inventory | |
| Local Wetland Inventory | |

