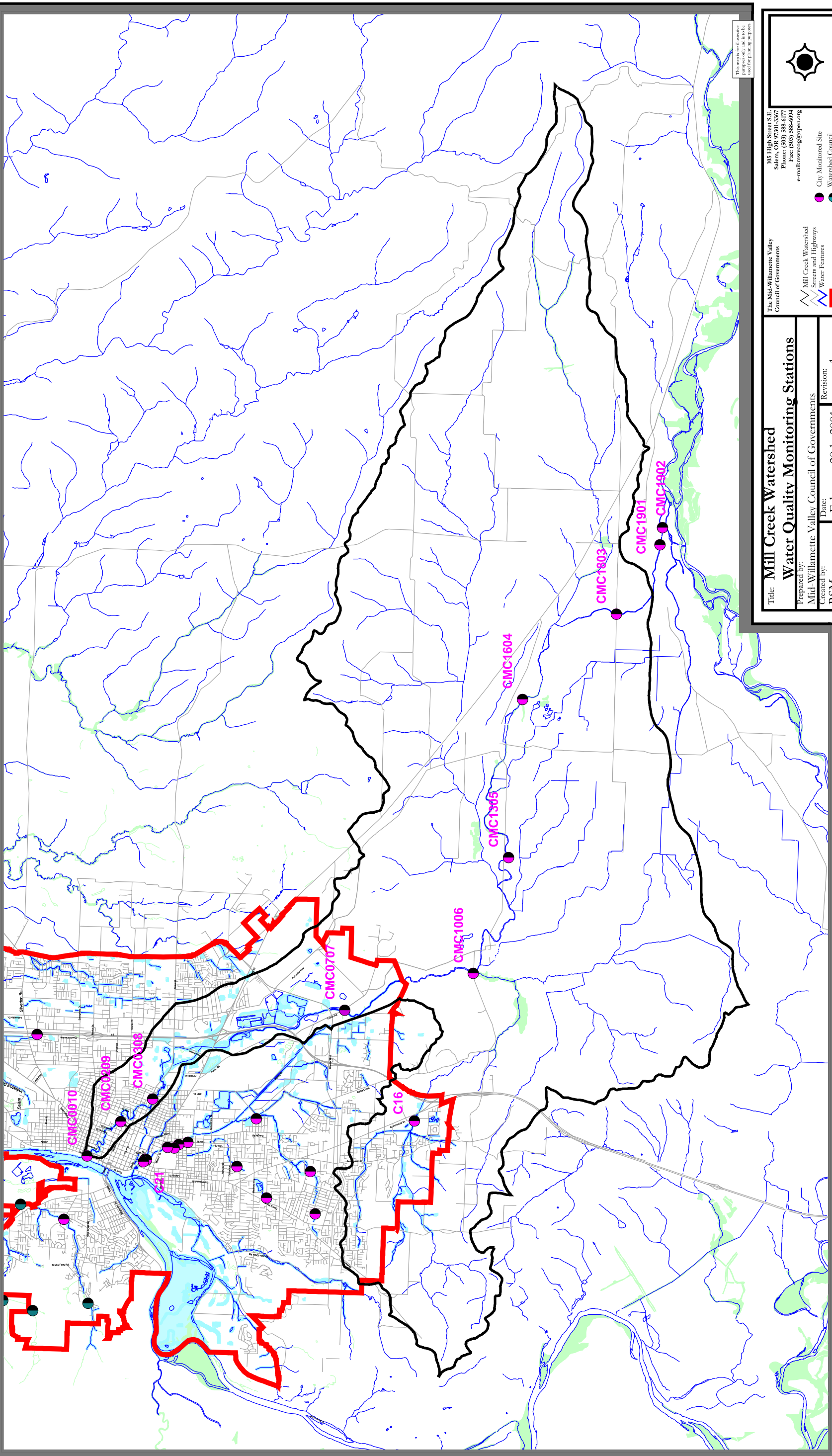


Mill Creek Watershed



This map is for illustrative purposes only and is to be used for planning purposes.

<p>Title: Mill Creek Watershed Water Quality Monitoring Stations</p> <p>Prepared by: Mid-Willamette Valley Council of Governments</p> <p>Created by: RSM</p> <p>Date: February 20th, 2001</p> <p>Revision: 1</p> <p>Filename: r:/common/naturales/watersheds/watersheds.apr</p> <p>11x17 layout</p>		<p>105 High Street S.E. Salem, OR 97301-5367 Phone: (503) 586-6700 e-mail: rwsc@govnet.org</p>
<p>Mill Creek Watershed Streets and Highways Water Features</p>	<p>City Monitored Site Watershed Council Monitored Site School Monitored Site</p>	<p>Urban Growth Boundary National Wetland Inventory Local Wetland Inventory</p>

Water Quality Monitoring Stations